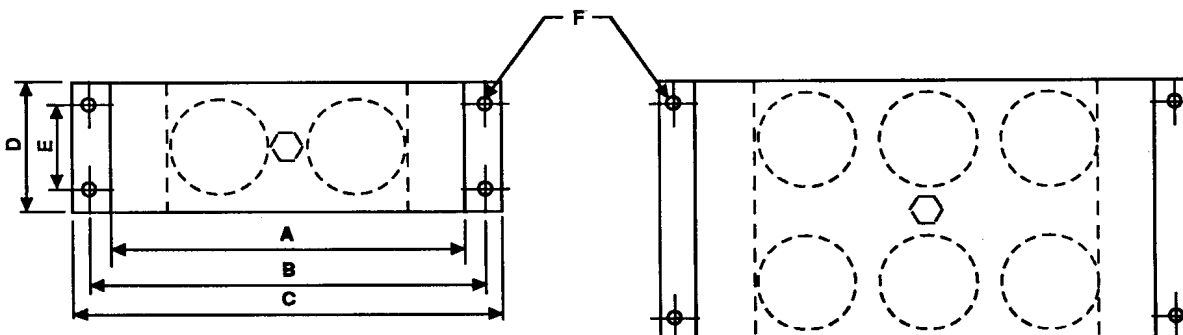
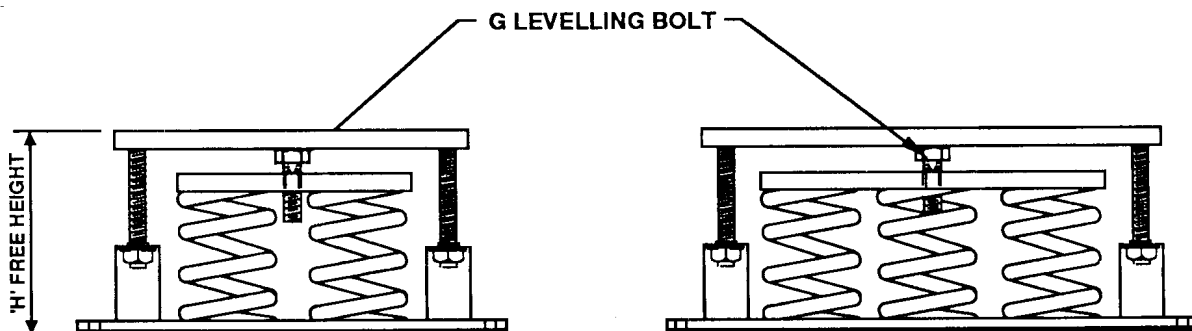
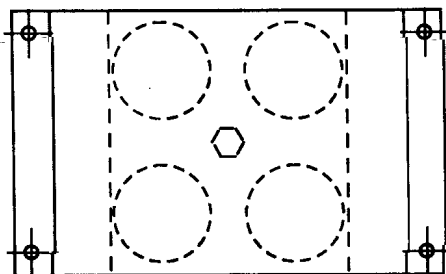
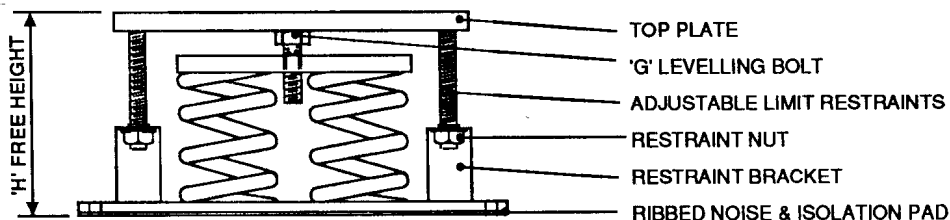


RS/1/2/IL

RS/1/6/IL



RS/1/4/IL



**DIMENSIONAL DATA**

MOUNT TYPE	A	B	C	D	E	F	G	H
RS/2/IL	330	370	410	130	70	14	20	205
RS/4/IL	330	370	410	220	130	18	24	230
RS/6/IL	450	506	550	220	130	18	24	245

**ALL PARTS ZINC PASSIVATED**

NOTE: ALL DIMENSIONS IN MM

STANDARD ENGINEERING TOLERANCE  $\pm 1$ MM, UNLESS OTHERWISE STATED.

RESEARCH AND DEVELOPMENT IS ONGOING & UNLESS STAMPED CERTIFIED (VALIDITY 3 MONTHS) THIS DATA SHEET IS ONLY CORRECT AT DATE OF ISSUE.



**EUROVIB (Acoustic Products) Limited**

Goodwood House, 86 Holmethorpe Avenue  
Redhill, Surrey RH1 2NL  
Telephone: (01737) 779577 Fax: (01737) 779537

THE COPYRIGHT IN THIS DRAWING AND THE RIGHT OF REPRODUCTION THEREOF IS VESTED IN AND BELONGS TO EUROVIB (ACOUSTIC PRODUCTS) LTD

GENERAL ARRANGEMENT DRAWING  
**TYPE RS MULTIPLE RESTRAINED  
SPRING MOUNT 30 MM DEFLECTION  
WITH INTERNAL LEVELLING**

Drawing No: **GA/018/296/REV1**

Date: **FEB 1996**